

Changes to the UMC survey

Goals:

- Increased participation

- Increased accuracy

- Reporting format that allow changes with time to be analyzed

Mechanisms:

- Shorten and simplify

- Make questions as direct as possible

- Report tabulated data

Consistency with data in ASEE survey?

Changes to the UMC survey

Goals:

- Increased participation

- Increased accuracy

- Reporting format that allow changes with time to be analyzed

Mechanisms:

- Shorten and simplify

- Make questions as direct as possible

- Report tabulated data

Consistency with data in ASEE survey?

Changes to the UMC survey - 2

Some aspects of the survey have never been reported, and nobody asked for it, so it has been eliminated.

9d) Does the MSE department have a PAID Associate Department Head/Chair?

 YES

9e) Number of proposals submitted/year/EFT?

9f) Number of proposals granted/year/EFT?

9g) Describe any course buy out policies that are enforced.

(300 character limit)

Changes to the UMC survey - 3

Some questions had so many qualifications, that they were cumbersome.

18)* Average monthly payment to stipend receiving grad students.

18) What is the nominal graduate student stipend amount in your department (provide monthly amount the student receives in Fall of 2009 after paying tuition and general fees)?

M.S. Students

Total stipend paid:

Dollar amount for medical insurance \$ paid by student: % paid by school:

Dollar amount of additional fees: \$ paid by student: % paid by school:

Dollar amount of out-of-state tuition: \$ paid by student: % paid by school:

Ph.D. Students

Total stipend paid:

Dollar amount for medical insurance \$ paid by student: % paid by school:

Dollar amount of additional fees: \$ paid by student: % paid by school:

)Dollar amount of out-of-state tuition: \$ paid by student: % paid by school:

Describe any enhancements or topping grants, signing bonuses, relocation costs, etc. offered to exceptional students:

Changes to the UMC survey - 4

Some questions involve averages that, when combined, do not differ from national averages.

17) What was the average SAT/ACT scores for entering freshmen in the following:

SAT	MSE	ACT	OVERALL ENGINEERING
<input type="text"/>		<input type="text"/>	<input type="text"/>

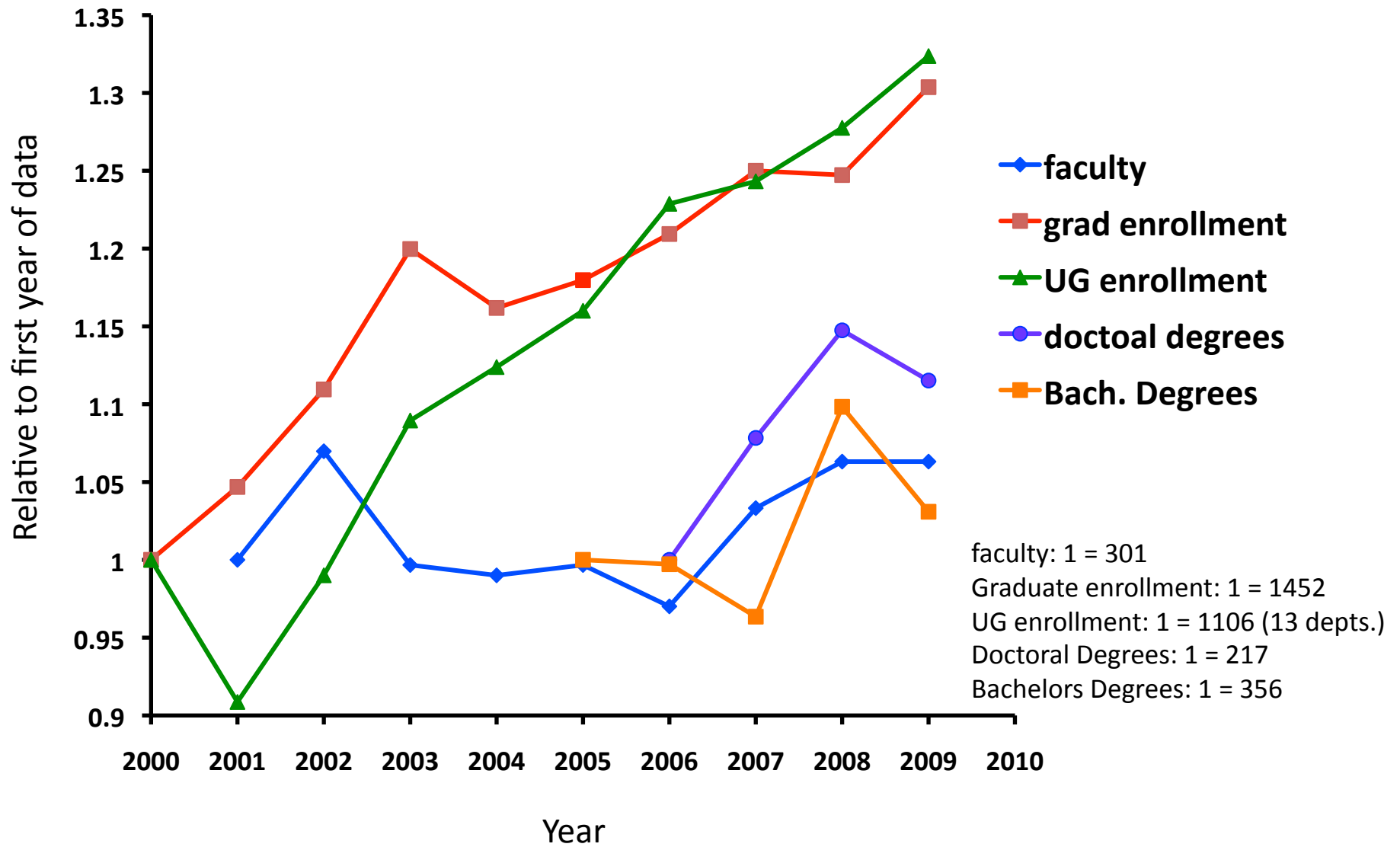
Changes to the UMC survey - 5

- 1) What is the departments exact name?
- 2) Name of degrees offered?
- 3)* Total annual research expenditures from external sources
- 4) How many equivalent full-time (EFT) tenure track faculty are in the department of MSE?
- 5)* How many equivalent full-time (EFT) non- tenure track faculty are in the department of MSE?
- 6)* Academic Year Faculty 9-month salaries? Provide only averages and only if a group contains three or more members (groups are assistant, associate, full)
- 8)* Number of academic year months supported by research grants for tenure track faculty
- 9)* Number of papers published in peer reviewed publications ?

Changes to the UMC survey - 6

- 10)* How many post-docs are employed in your department? (M/F)
- 11)* How many graduate students are enrolled in the department (Mas/Doc),
Number of graduate students supported by research grants
Number supported by external fellowships
- 12)* Degrees awarded: Bachelors, Masters, Doctoral, M/F, ethnic minorities
- 14)* Undergraduate enrollment by class, M/F
- 18)* Average monthly payment to stipend receiving grad students.

Trends for totals in 15 departments



15 departments

MIT

UIUC

UC Berkeley

Northwestern

Ga Tech

University of Michigan

Cornell University

Penn State

University of Florida

Carnegie Mellon

California Institute of Technology

University of Pennsylvania

University of California - Santa Barbara

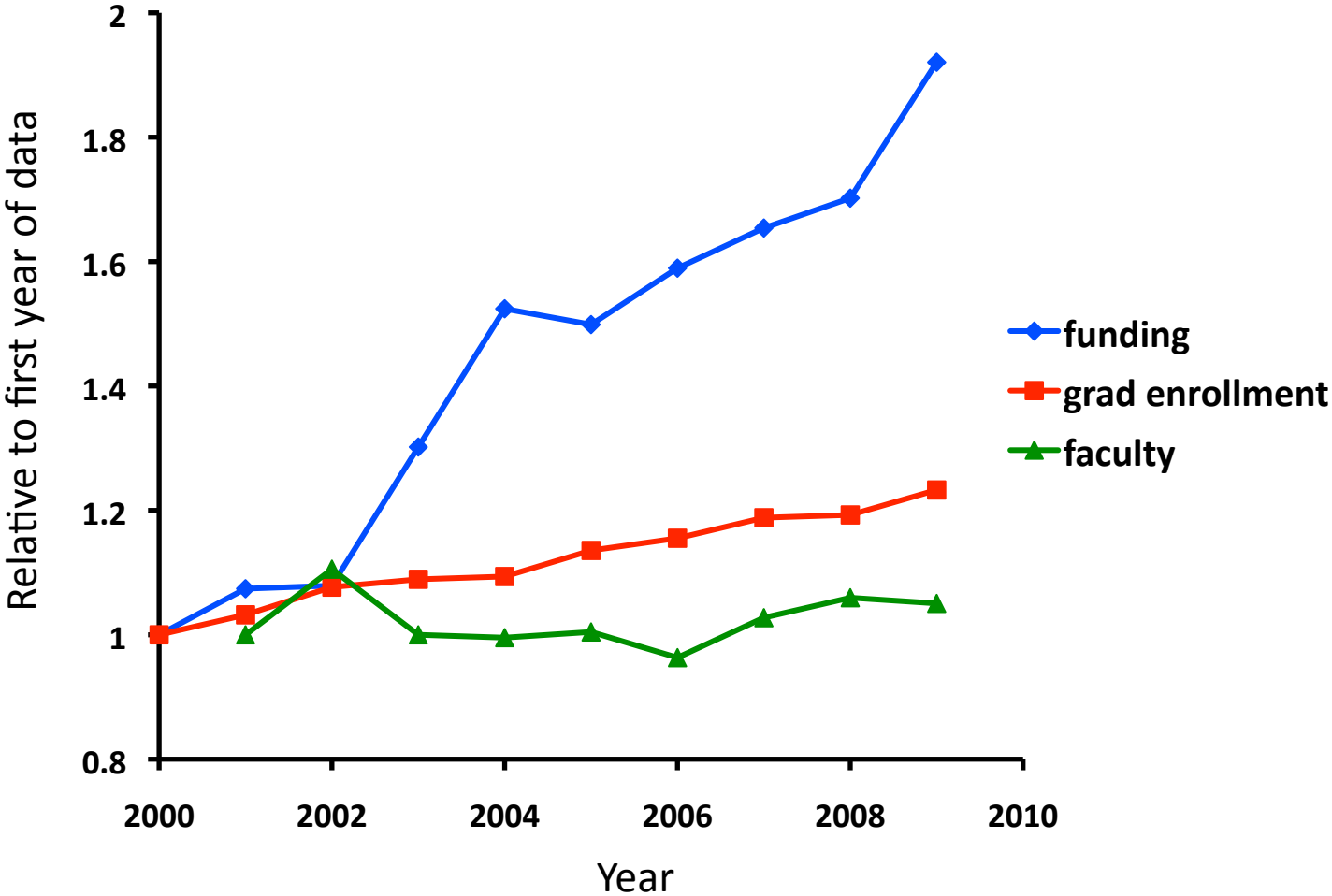
Stanford University

Ohio State University

Sample Data

Penn State						
	Research Exp.	Faculty Size	Grad Enroll	UG Enroll	Doc. Degrees	Bach. Degrees
2000	\$8,439,514		110	144		
2001	\$7,975,290	33	116	98		
2002	\$6,556,551	11	123	83		
2003	\$10,028,000	32	132	94		
2004	\$12,827,130	30	137	69		
2005	\$13,544,934	30	145	66	8	47
2006	\$14,168,556	30	111	83	12	20
2007	\$13,565,303	30	174	76	10	24
2008	\$14,476,467	30	145	72	29	35
2009	\$15,901,650	29	149	76	21	19
University of Florida						
	Research Exp.	Faculty Size	Grad Enroll	UG Enroll	Doc. Degrees	Bach. Degrees
2000	\$12,403,000		218	178		
2001	\$16,249,000	28	234	190		
2002	\$15,163,000	28	253	174		
2003	\$20,773,000	26	242	154		
2004	\$17,810,000	27	213	124		
2005	\$15,594,000	28	234	139	43	29
2006	\$14,569,000	29	262	158	35	37
2007	\$20,935,000	29	264	175	19	25
2008	\$20,066,000	31	237	153	26	28
2009	\$20,298,000	29	231	181	40	28
CMU						
Year	Research Exp.	Faculty Size	Grad Enroll	UG Enroll (3)	Doc. Degrees	Bach. Degrees
2000	5,915,600	18	66	65		
2001	5,530,935	15	63	43		
2002	5,685,000	17	67	50		
2003	5,135,000	16	65	52		
2004	4,044,000	17	62	60		
2005	5,252,891	17	64	65	17	17
2006	6,298,460	19	73	68	9	12
2007	6,166,680	20	85	91	6	22
2008	8,371,000	17	86	99	16	19
2009	8,136,608	20	90	102	10	24

Trends for totals in 10 departments



External funding: 1 = \$69,500,000

Graduate enrollment: 1 = 1121

Faculty: 1 = 218