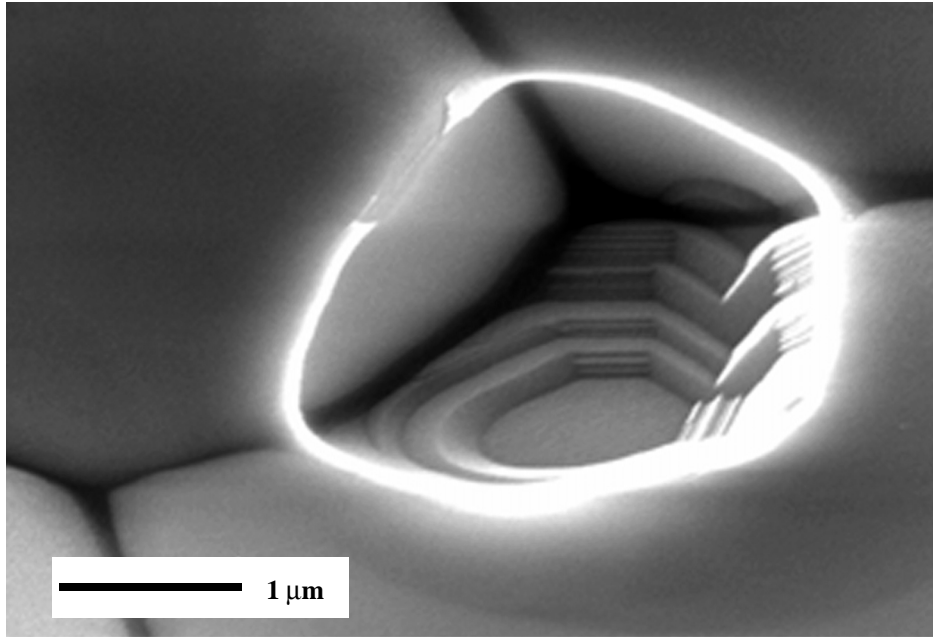


Nano-theater in TiO₂



Interface faceting occurs whenever the facets possess sufficiently low free energy to compensate for the increase in interface area. This image shows facets which form a “staircase” on the surface of a pore located in a triple junction exposed by intergranular fracture of polycrystalline TiO₂. A ring of lightening is produced from charging around the perimeter of the pore. The structure is reminiscent of an imaginary “nano-theater”.

Ying Pang and Gregory S. Rohrer
Department of Materials Science and Engineering
Carnegie Mellon University

Supported by the MRSEC program of the NSF under
Award Number DMR-0079996.

Second place, April 2003

Classification: Scanning Electron Micrographs