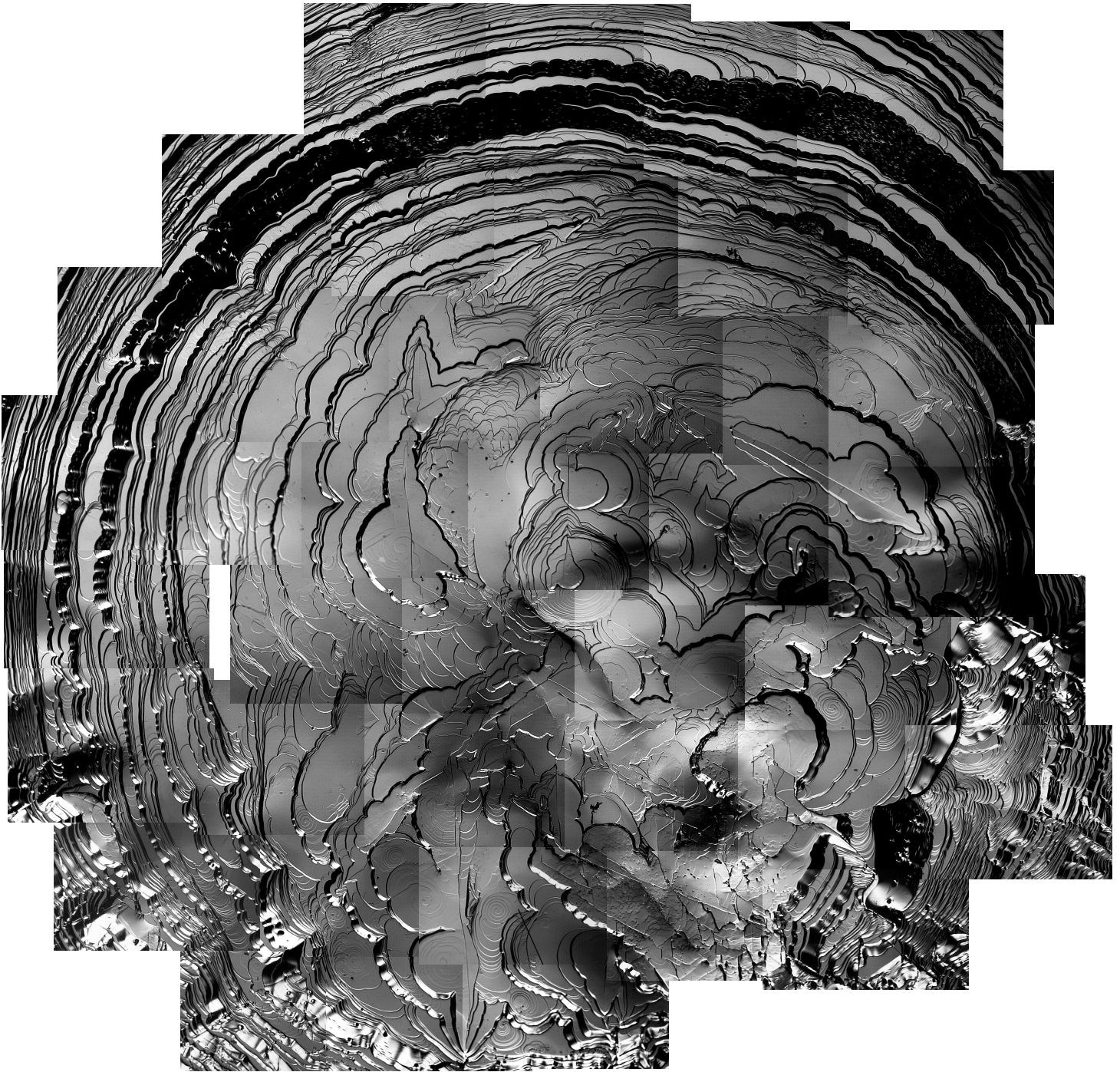


# 6H-SiC(0001) Growth Surface



This Nomarski optical micrograph montage of a 6H-SiC(0001) growth surface was taken from a single crystal boule grown by the PVT process. The images were taken of the atomically flat region on top of the boule. The central region is comprised of terraces separated by a combination of curved and straight steps while the periphery is made up of terraces bounded by concentric rings. In both regions, the facets are decorated with smaller spiral steps that form 20 to 25  $\mu\text{m}$  wide concentric terraces. Both clockwise and counter-clockwise spirals are observed but, instead of having a random distribution, spirals that rotate in the same direction are clustered in groups. This clustering of screw dislocations with the same rotation suggests dislocation annihilation during growth.

Jennifer Giocondi  
Advisor: Gregory S. Rohrer  
This work was supported by an NSF REU supplement to  
YIA Grant No. DMR-9458005.

100th Annual Meeting of the American Ceramic Society  
**1st Place** Ceramographic Competition 1998  
Classification: Undergraduate